

Definition of commonly used terms

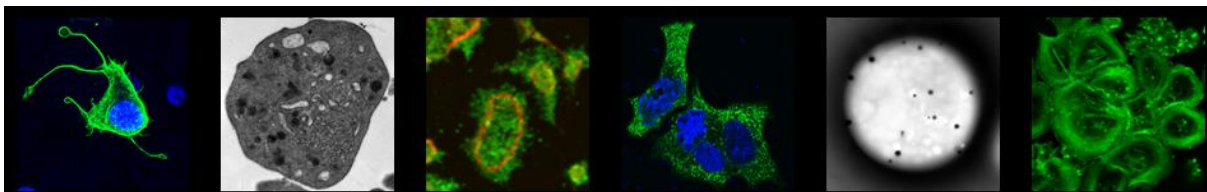
The definition of the major terms used to describe platelet function disorders is show below

- **Born Aggregometry**

Born aggregometry is the most widely used clinical test to identify platelet function disorders. It was first developed by Prof Gus Born in 1962 and measures the clumping of platelets following the addition of a stimulant. The test does not detect all platelet function disorders.

- **Storage Pool Disorder**

The term storage pool disorder is used to describe platelets that are associated with impaired ability to release the contents of a certain type of granule contained in the platelet cytoplasm known as a dense granule. The release of the granule contents plays an important role in mediating platelet activation by releasing agents such as ADP which activate other platelets. A storage pool disorder could be due to the absence reduced levels of granules or an impairment in the ability to release the contents of the granules. The term storage pool disorder covers a wide range of platelet disorders and additinal work is required to establish the basis of the disorder. The most widely known platelet storage disorder is Hermansky-Pudlak syndrome (see Hermansky-Pudlak syndrome Factsheet).

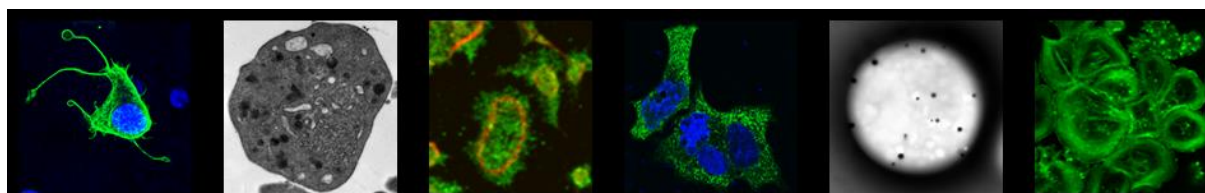


Helping people with bleeding disorders

www.plateletcharity.co.uk

Registered Charity Number: 1151168

Registered Address : Curo House, Greenbox, Westonhall Road, Stoke Prior, Bromsgrove, B60 4AL.



Helping people with bleeding disorders

www.plateletcharity.co.uk

Registered Charity Number: 1151168

Registered Address : Curo House, Greenbox, Westonhall Road, Stoke Prior, Bromsgrove, B60 4AL.